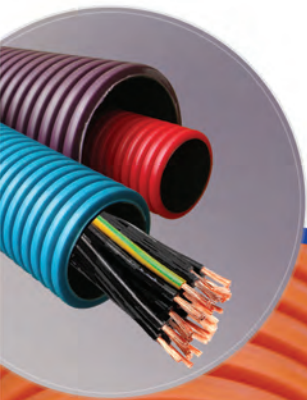


# Telecorr

DWC HDPE Pipes



## About Alom

Every few years there comes an organization that redefines standards and revolutionizes the way we live. Alom strives to be one such company where we create products using green technology for a better tomorrow.

Alom Group of Companies, based in Kolkata, is one of the pioneers and largest manufacturers of Aluminium Extrusions and its value added products for the last 25 years. We follow stringent ISO standards to deliver the best quality products to our domestic as well as foreign markets. Being a constantly developing company we, at Alom Poly Extrusions Ltd., have taken up the initiative of being the First Unit in Eastern India for manufacturing Double Wall Corrugated High Density Polyethylene (DWC HDPE) Conduit system for Railways, Electrical and Telecom Cable protection under the brand name **Telecorr** in sizes ranging from 90 to 300mm OD.



## About Double Walled Corrugated High Density Polyethylene Duct

**Telecorr** ducts are economically viable for its high strength-to-weight ratio, long metallurgical life expectancy, structural integrity and socio-environmental benefits (saving enormous time for project implementation). **Telecorr** ducts are ideal for cable ducting due to its crush strength, bending radius and superior pulling ability. They provide the necessary reinforcement for future road constructions, unanticipated digging work and rodents.

These conduits are manufactured by fusing twin layers of High Density Polyethylene, which are corrugated from outside and glass smooth surface from inside. It is done through a comprehensive green and clean process meticulously following National Standards as: -

- ▶ **IS 14930: 2001 Part 2 for Conduit System Buried Underground.**
- ▶ **Generic Requirements No: GR/DWC-34/01 Sep 2007** by the Telecom Engineering Centre, Department of Telecom, for **DWC HDPE Ducts.**

All necessary Testing facilities in accordance with the above mentioned codes are also available in-house which guarantees a superior unmatched quality.

## Applications of **Telecorr**

Used in Highways and National Infrastructure development, Housing Developments, Special Economic Zones, Commercial Projects, Retail and Industrial Infrastructure applications:

- ▶ **Telecom ducting**  
(Underground Cable Protection):
  - ▶ Protection of cables at rail or road crossings
  - ▶ Protection of cables across water bodies
  - ▶ Protection of optic fiber cables networks
  - ▶ Protection for heavy loading areas
  - ▶ Main cable duct for sub-duct networks
  - ▶ Protection of copper cables
  - ▶ Used as casing duct for cables in Railway signaling departments
- ▶ **Electrical Applications:**
  - ▶ Casing for street light cables laid between poles
  - ▶ Power cable protection in distribution networks
  - ▶ Low Tension Electric (LT) Cable Protection
- ▶ **Indoor Ventilation Systems**
- ▶ **Plumbing Pipes Protection**
- ▶ **Half split Telecorr duct also available for protection of existing ducts or cables**

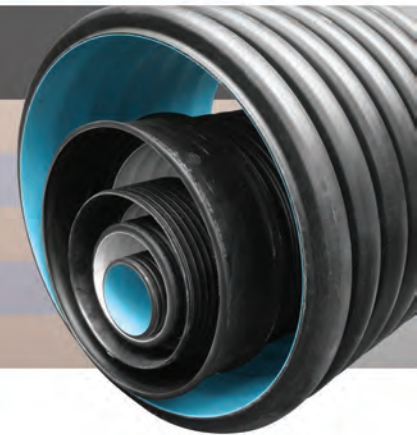
## Advantages of Telecorr

- ▶ **Long life** – compared to other conventional piping systems
- ▶ **Lightweight** – Lower product and very easy for installation
- ▶ **Excellent Strength** – Withstands constant heavy overload pressure
- ▶ **Non-Conducting** – Not susceptible to galvanic corrosion or electrical interference
- ▶ **Low Coefficient of Friction** – Simplifies field installation due to lower cable stress
- ▶ **Flexible** – Does not break and adaptable to ground heaves and shifts
- ▶ **Longer lengths** – fewer joints and easier to lay
- ▶ **Chemical Resistance** - Extended underground life
- ▶ **Moisture Proof and Watertight** – Complete cable protection
- ▶ **Immune to Bacterial or Fungal Growth** – Impervious to insect attacks
- ▶ **Color Coded** – Easy to identify
- ▶ **Non-Toxic Rodent Repelling Properties** - for protection against rodent infestation (on demand)
- ▶ **Flame Retardant** – for flame propagation protection (on demand)



## Available Sizes

Sl. No.	Duct Size (mm)	Nominal O.D. (mm)	Nominal I.D. (mm)	Standard length (m)
1.	90/76	90	76	6
2.	120/100	120	100	6
3.	160/133	160	133	6
4.	200/168	200	168	6
5.	296/250	296	250	6



Standard Blue or Black color available. Other colors provided on demand

Properties available on demand:

- Non toxic rodent repellent
- Flame resistant

\*\* Fittings and Accessories for all sizes available on request



Adapters and Reducers



Double End Sockets



Endcap



Elbows



Y-Parts



## Telecorr compared to other Conventional Ducts

PROPERTY	Telecorr™	RCC Pipes	Corrugated Metal	PVC Pipes
<b>Flexibility</b>	Flexible and versatile. Suitable for various applications.	Rigid and unbendable.	Rigid and unbendable.	Rigid and unbendable. Limited application.
<b>Transport And Handling</b>	Handling is easy (20 times lighter than concrete). Low transport cost.	Heavy & brittle. Can break during handling & transport. High transport cost.	Very heavy. High transport cost.	Easy to handle.
<b>Structural</b>	Can bear heavy overloading. Can be laid in minimum soil cover (1-2 feet) and doesn't crack due to earth adjustments.	Extra reinforcement required at joints for heavy loading and cracks due to tectonic movements.	Cracks due to soil settlement and tectonic movements.	Cracks due to soil settlement and tectonic movements.
<b>Joints</b>	Fewer joints. Can be supplied in Coil form up to 30 meters. Easy coupling jointing method.	Extra joints as supply length is 2M. Extra coupling material required. Ingress of external fluids is high.	Higher joints, as supply length is 6 meters. Additional Coupling material required. Ingress of external fluids is high.	Higher joints, as supply length is up to 6 meters.
<b>Durability</b>	Excellent chemical and abrasion resistance. Very long life.	Susceptible to road salts and other chemicals. Requires quick replacement.	Susceptible to road salts and other chemicals. Requires quick replacement.	Average resistance. Shorter life.

For Additional Information and Technical Details  
Please contact us at:

**Alom Poly Extrusions Ltd.**

Alom House, 7B Pretoria Street,  
Kolkata – 700071, West Bengal, India

Phone: +91 33 4010 6789  
Fax: +91 33 2282 7305

Email: [mktg@alom.in](mailto:mktg@alom.in)  
Website: [www.alom.in](http://www.alom.in)